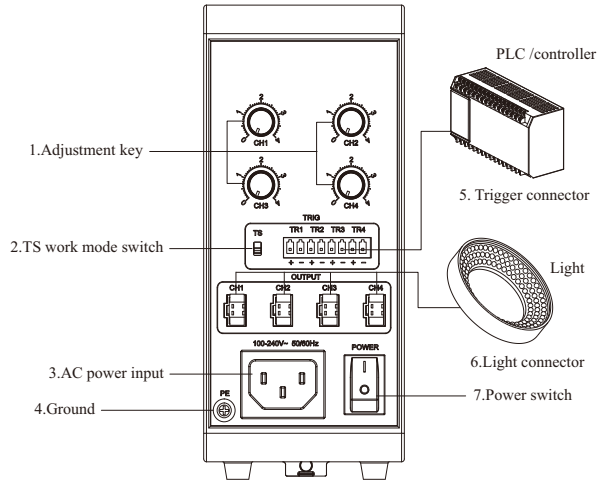


AP Analog Voltage Controller

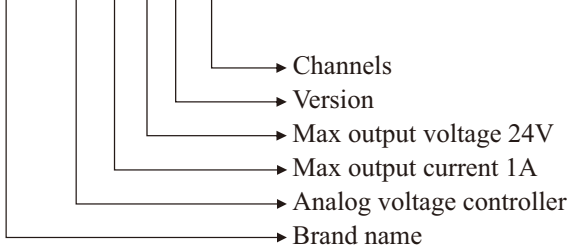


Remark: above table is for AP1024F-4. Trigger connector and light connector quantity of AP1024F-1/2/3 are 1, 2, or 3 respectively



Selection Guide

OPT - AP 10 24 F - 4



Model	Channels	CompatibleLight
OPT-AP1024F-1	1	for 10mA - 1A 24 V lights
OPT-AP1024F-2	2	for 10mA - 1A 24 V lights
OPT-AP1024F-3	3	for 10mA - 1A 24 V lights
OPT-AP1024F-4	4	for 10mA - 1A 24 V lights

Product Features

- 1 Manual stepless intensity control.
- 2 Trigger signal input: connect an external signal source (e.g. a camera trigger signal) to strobe the LED light, and extend life span of light
- 3 Easy to install: screw and DIN rail mounting available

Device Overview

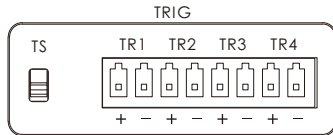
No	Item	Description
1	Adjustment key	One key per channel, clockwise rotation to increase intensity, anti-clockwise rotation to decrease intensity
2	TS work mode switch	To switch ON/OFF work mode: up - ON, down - OFF
3	AC power input	Input voltage 100 - 240 V AC, 50/60 Hz
4	Ground	Ground protection
5	Trigger connector	For connection with an external trigger source such as a PLC, sensor or camera
6	Light connector	For 24 V lights, rated current < 1A
7	Power switch	To turn the controller on/off

Parameters

Item	Parameter	Description
Input voltage	AC100~240V	50/60Hz
Output voltage	Can set in 14.0~24.0V (±0.2V)	continuous voltage change available
Lighting mode	Continuous on / Strobe	
Intensity control	Stepless	via adjustment key
Trigger input	Synchronous strobe with external signal	
Trigger way	Switching value (ON / OFF)	
Trigger delay time	≤ 80μs	
Trigger frequency	Max 1KHz	
ON/OFF mode switching	Support	Switching between ON and OFF trigger mode via TS trigger switch: up - ON, down - OFF
Output power	20W/CH	1CH / 2 CH total output ≤ 30W 3 CH / 4 CH total output ≤ 40W
Standby power consumption	AP1024F-1	<3.5W
	AP1024F-2	<3.6W
	AP1024F-3	<4.5W
	AP1024F-4	<5.0W
Hi-Pot test	AC1500V 1min	Leak current < 10mA
Insulation resistance	DC500V	> 20MΩ
Work temperature	-5°C~50°C	
Size (L x W x H)	73.5 x 129.5 x 166mm	
Weight (kg)	AP1024F-1/2	0.6
	AP1024F-3/4	0.7

Trigger Connector

AP1024F-1/2/3/4 offer 1, 2, 3, or 4 channels respectively, each channel has “+” and “-” input ports. Please refer to drawing below for the trigger connector of AP1024F-4



Work Mode Setting

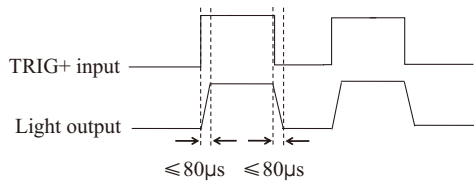
AP1024F controller has ON and OFF two work modes, set via TS work mode switch. Refer below table for details:

TS	Work Mode	Description
up	ON	TRIG+ and TRIG- disconnected, the light is on; TRIG+ and TRIG- connected, the light is off.
down	OFF	TRIG+ and TRIG- disconnected, the light is off; TRIG+ and TRIG- connected, the light is on.

Trigger Sequence Chart

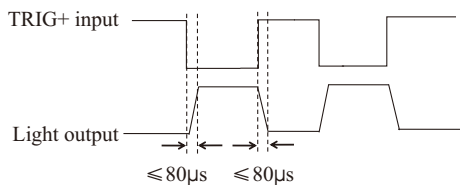
ON Mode

When connected to trigger signal, TRIG+ and TRIG- disconnected, the light is on; TRIG+ and TRIG- connected, the light is off.

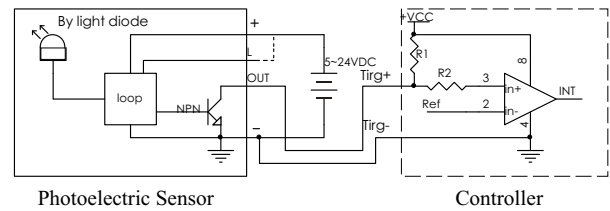


OFF Mode

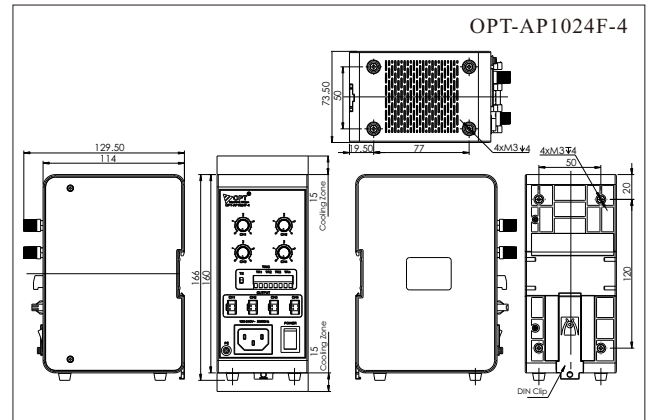
When connected to trigger signal, TRIG+ and TRIG- disconnected, the light is off; TRIG+ and TRIG- connected, the light is on.



Trigger Wiring Diagram



Dimensional Drawing [mm]



Note: The sizes of OPT-AP1024F-1/2/3/4 controllers are different