

2/3" Megapixel Anti-Vibration and Shock

Ruggedized Megapixel Lenses

NEW

JCM-V Series

High Resolution FA/MV Lenses

Kowa's new JCM-V series is made for use in high vibration and high shock environments. With a design based on Kowa's standard 2/3" JCM lenses, this new ruggedized megapixel lens series is ideal for applications that require increased durability and high optical performance.

Features

- For megapixel applications requiring a sensor size of 2/3" (Φ11mm) or smaller.
- Unique mechanical design to guard against strong vibration and shock.
- Two way reversible nut is utilized to tightly lock the focus adjustment ring in place.
- All internal glass elements are glued to the inside housing to improve stability.
- Interchangeable iris plates are used to select the F-stop.



NEW JCM-V SERIES

Interchangeable Iris Plates

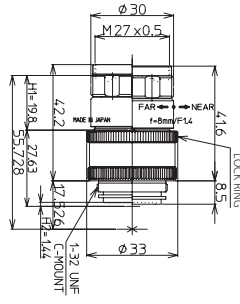
- The JCM-V series uses interchangeable iris plates instead of mechanical iris diaphragms with moving blades. You can choose from four iris plates to adjust the F-stop.



Variable Step Up Rings

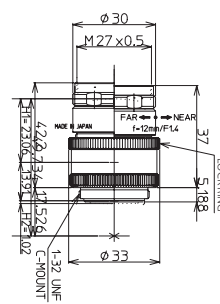


NEW LM8JCM-V



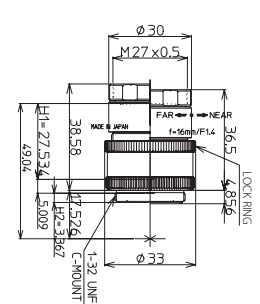
2/3" 1/1.8" 1/2" 8mm
 FIXED MEGA C-MT METAL
 Fixed Focal Megapixel C-mount Metal Body

NEW LM12JCM-V



2/3" 1/1.8" 1/2" 12mm
 FIXED MEGA C-MT METAL
 Fixed Focal Megapixel C-mount Metal Body

NEW LM16JCM-V



2/3" 1/1.8" 1/2" 16mm
 FIXED MEGA C-MT METAL FLOAT
 Fixed Focal Megapixel C-mount Metal Body Floating

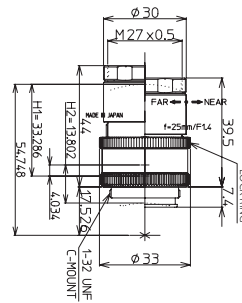
Focus Adjustment Procedure

- Step one** Unscrew the bottom ring of the outside body to adjust the focus to optimal position.
- Step two** Screw the red two way reversible nut on the center body towards the bottom ring to lock in the focus.



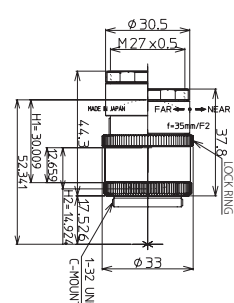
Two Way Reversible Nut

NEW LM25JCM-V



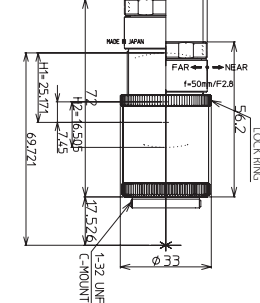
2/3" 1/1.8" 1/2" 25mm
 FIXED MEGA C-MT METAL FLOAT
 Fixed Focal Megapixel C-mount Metal Body Floating

NEW LM35JCM-V



2/3" 1/1.8" 1/2" 35mm
 FIXED MEGA C-MT METAL FLOAT
 Fixed Focal Megapixel C-mount Metal Body Floating

NEW LM50JCM-V



2/3" 1/1.8" 1/2" 50mm
 FIXED MEGA C-MT METAL FLOAT
 Fixed Focal Megapixel C-mount Metal Body Floating

Model	LM8JCM-V	LM12JCM-V	LM16JCM-V	LM25JCM-V	LM35JCM-V	LM50JCM-V
Focal Length (mm)	8	12	16	25	35	50
Image Size (mm)	8.8×6.6 (Φ11)	8.8×6.6 (Φ11)	8.8×6.6 (Φ11)	8.8×6.6 (Φ11)	8.8×6.6 (Φ11)	8.8×6.6 (Φ11)
Iris Range (F-stop)	F1.4/F4/F8/F16	F1.4/F4/F8/F16	F1.4/F4/F8/F16	F1.4/F4/F8/F16	F2/F4/F8/F16	F2.8/F4/F8/F16
Focusing Range (m)	0.1~∞	0.15~∞	0.2~∞	0.2~∞	0.2~∞	0.2~∞
Control Iris	Manual	Manual	Manual	Manual	Manual	Manual
Focus	Manual	Manual	Manual	Manual	Manual	Manual
Shooting Range at M.O.D. (mm)	120.3(H)×90.0(V)	110.0(H)×82.5(V)	112.8(H)×84.4(V)	71.1(H)×53.3(V)	47.9(H)×35.8(V)	29.3(H)×21.9(V)
Angle of 2/3 Inch	56.5×43.9	38.3×29.1	30.0×22.7	19.6×14.8	14.4×10.8	9.6×7.2
View 1/1.8 Inch	47.4×36.3	31.7×24.0	24.7×18.6	16.1×12.1	11.8×8.8	7.9×5.9
(Degrees) 1/2 Inch	42.6×32.5	28.3×21.4	21.8×16.4	14.0×10.5	10.5×7.9	7.0×5.2
TV Distortion (%)	-0.6	-0.07	-0.05	-0.04	-0.2	-0.03
Mount	C-mount	C-mount	C-mount	C-mount	C-mount	C-mount
Filter Thread (mm)	M27×P0.5	M27×P0.5	M27×P0.5	M27×P0.5	M27×P0.5	M27×P0.5
Size (mm)	Φ33.0×41.6	Φ33.0×37.0	Φ33.0×36.5	Φ33.0×39.5	Φ33.0×37.8	Φ33.0×56.2
Temperature Range	-10°C~+50°C	-10°C~+50°C	-10°C~+50°C	-10°C~+50°C	-10°C~+50°C	-10°C~+50°C

EHD imaging GmbH
 Zum Rennplatz 15
 D-49401 Damme

Tel: +49-5491-2090
 email: info@ehdimaging.de
 web: www.ehd.de

† Images may differ from the actual product. † Specifications and availability are subject to change without notice.